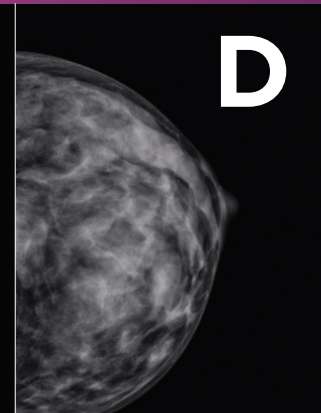
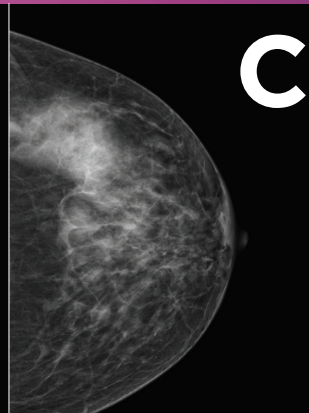
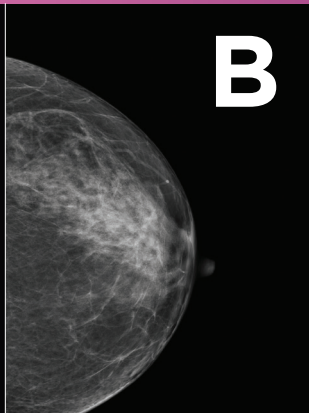
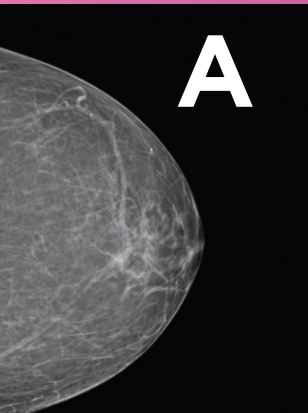


DO YOU KNOW YOUR
BREAST DENSITY SCORE?



**Almost
Entirely Fatty**

There is almost no dense tissue which makes abnormalities easy to detect.

**Scattered
Fibroglandular
Densities**

Scattered areas of density but majority of tissue is fatty.

**Heterogeneously
Dense**

More than half the breast is dense tissue.

**Extremely
Dense**

Nearly all of the tissue is dense.

BREAST DENSITY QUICK FACTS

1. Dense breasts are quite common – about two thirds of premenopausal women have breast density of 50% or higher.¹
2. For women, breast density is the most prevalent risk factor for breast cancer.²
3. Dense breast tissue can reduce the sensitivity in reading your mammogram.
4. Mammography is the definitive way to assess the density of your breasts.
5. The addition of Automated Breast Ultrasound (ABUS) to mammography has been shown to improve invasive breast cancer detection by 57% over mammography alone for women with dense breasts.³

¹ Wilczek et al. *EJR* 2016; 85:1554.

² Engmann et al. *JAMA Oncol.* 2017; 3(9) 1228-36.

³ Wilczek et al. *EJR* 2016; 85:1558.

APPOINTMENTS
306.569.9729
radiology.ca

MAYFAIR[®]
DIAGNOSTICS